

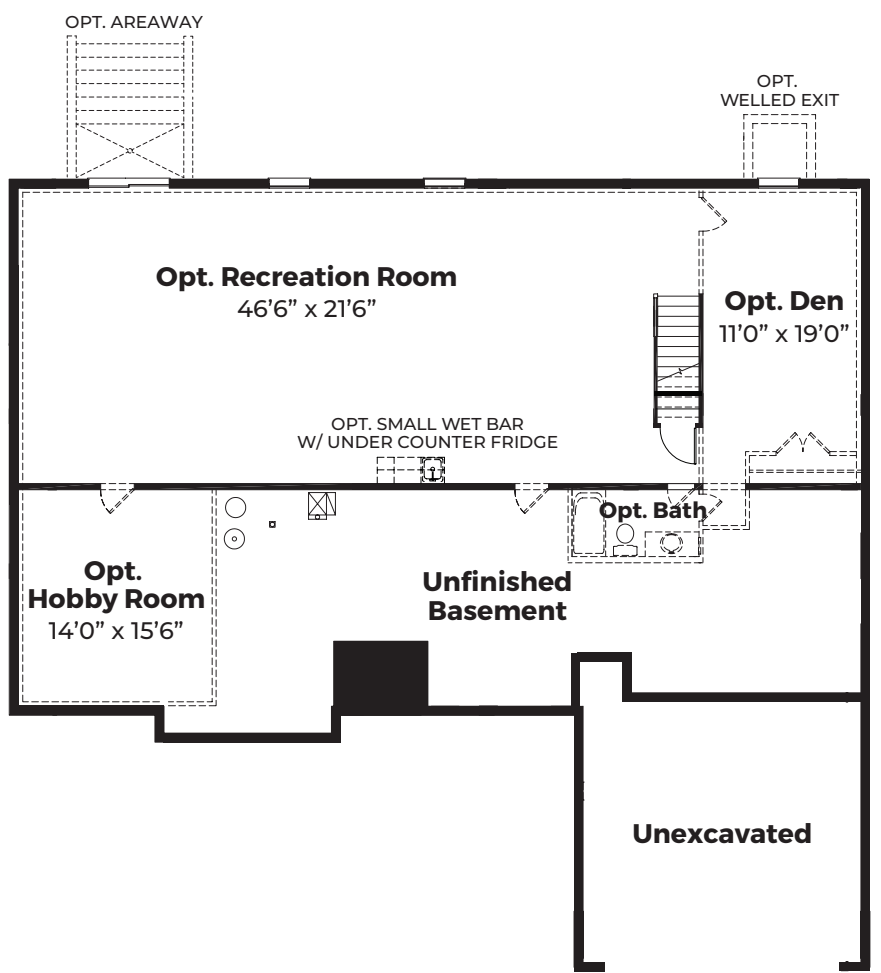


The Bridgewater II

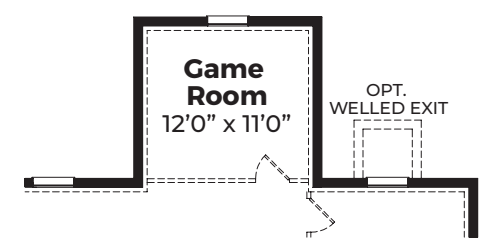
3 Bedrooms | 3 Bathrooms | 2-Car Garage | 2,522+ SF



Optional Lower Level at Extended Great Room & Master Bedroom Elevation 1



FOUNDATION



Optional Lower Level at Game Room with Optional Morning Room



BUNGALOW



COTTAGE



ARTS AND CRAFTS



FARMHOUSE WITH STONE

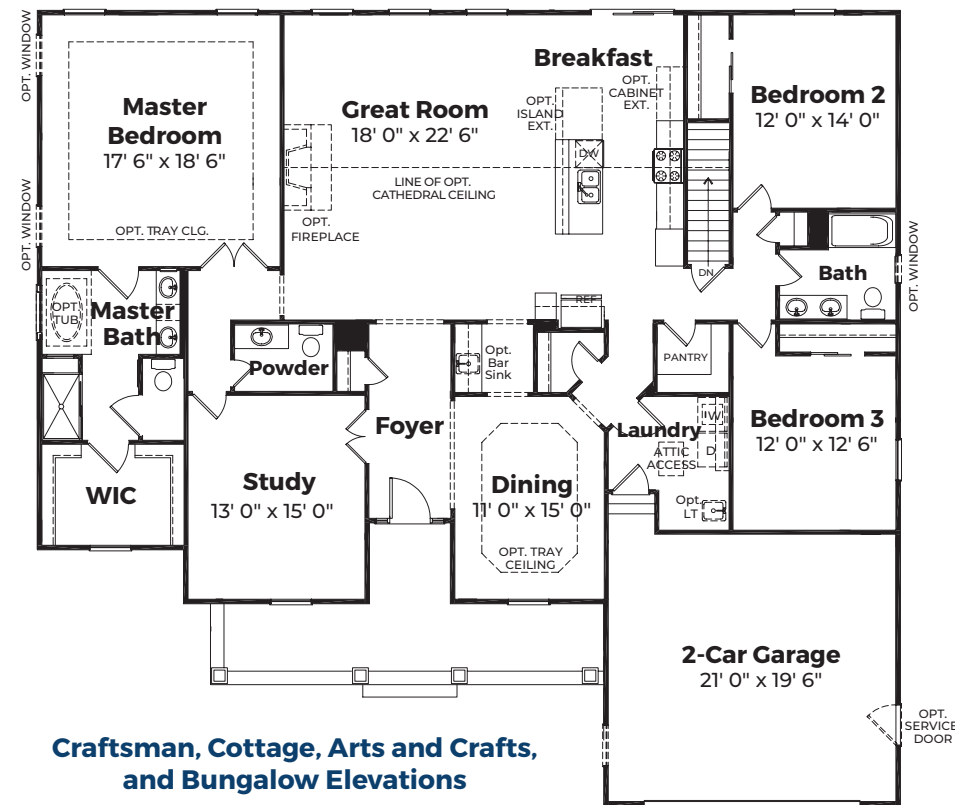


EASTERN SEABOARD



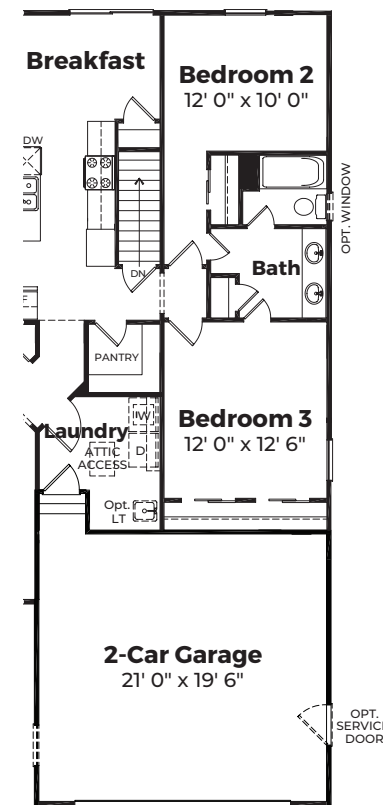
CRAFTSMAN

BASE PRICE	
HOMESITE NUMBER	
HOMESITE PREMIUM	
OPTIONS	
TOTAL	

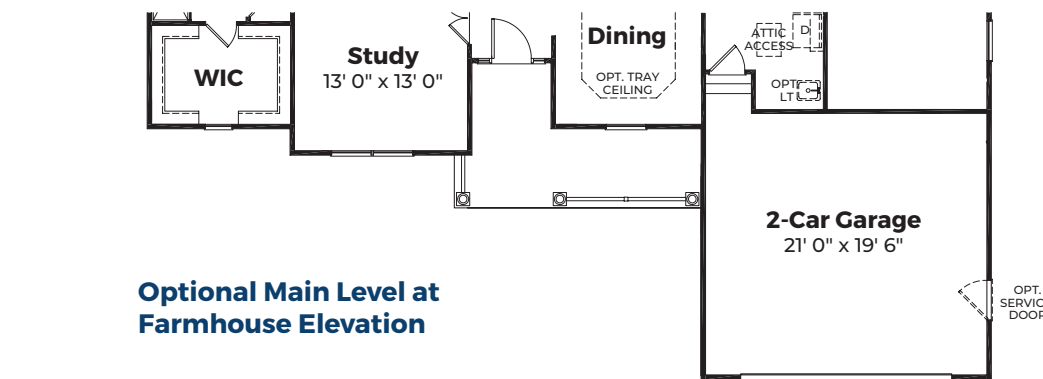


Craftsman, Cottage, Arts and Crafts, and Bungalow Elevations

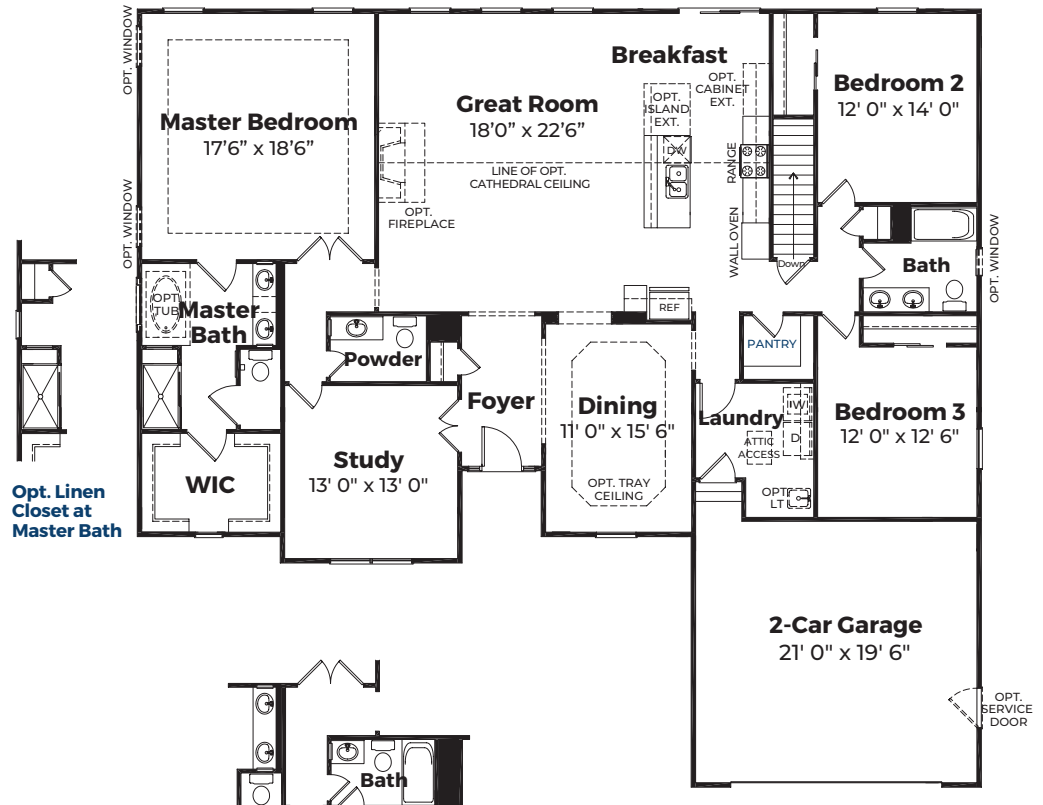
MAIN LEVEL



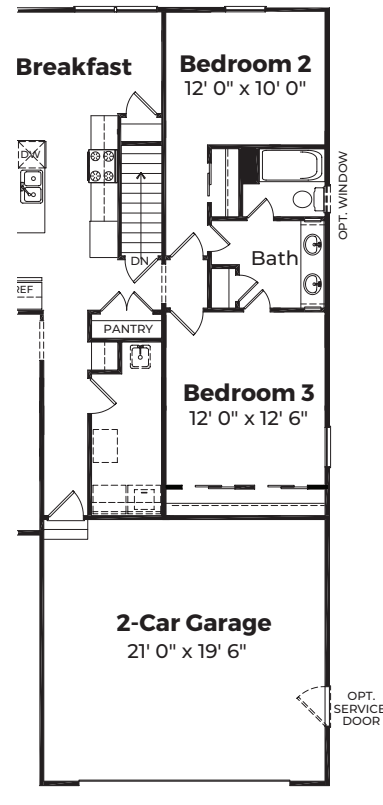
Optional Shared Bath Plan @ Craftsman, Cottage, Arts & Crafts, and Bungalow Elevations



Optional Main Level at Farmhouse Elevation

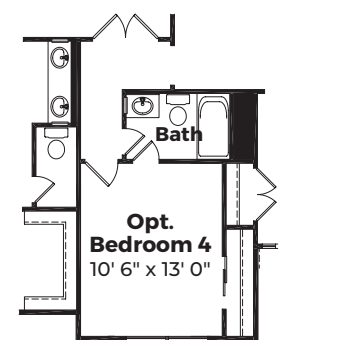


Opt. Linen Closet at Master Bath



Optional Shared Bath Plan @ Eastern Seaboard and Farmhouse Elevations

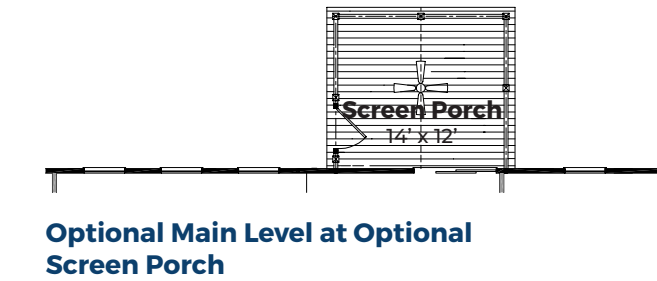
MAIN LEVEL



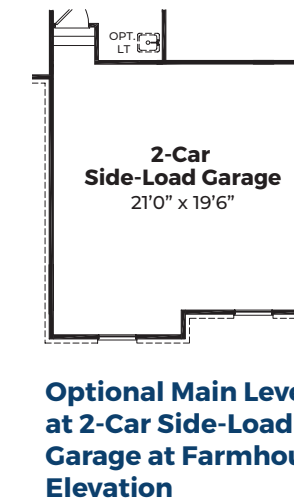
Optional Main Level at Optional Fourth Bedroom



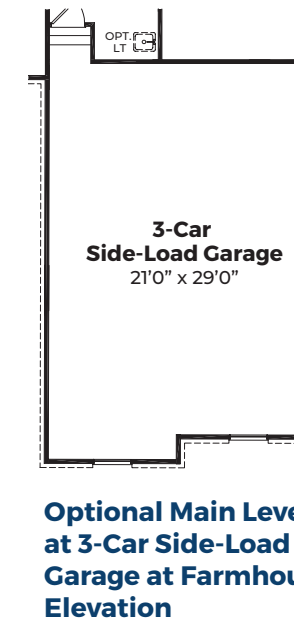
Optional Main Level at Optional Morning Room



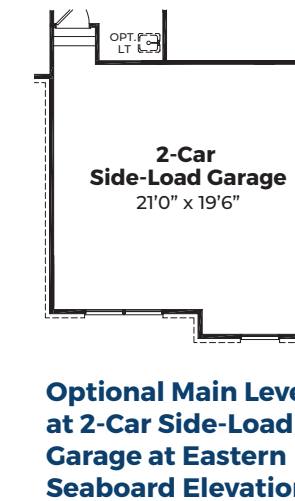
Optional Main Level at Optional Screen Porch



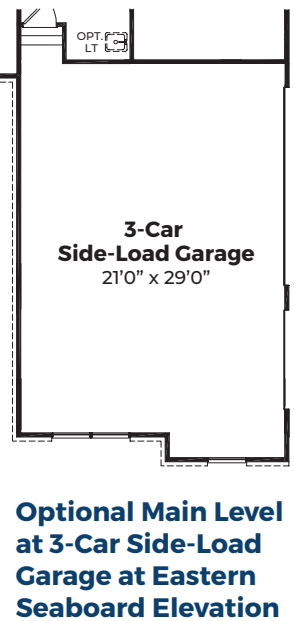
Optional Main Level at 2-Car Side-Load Garage at Farmhouse Elevation



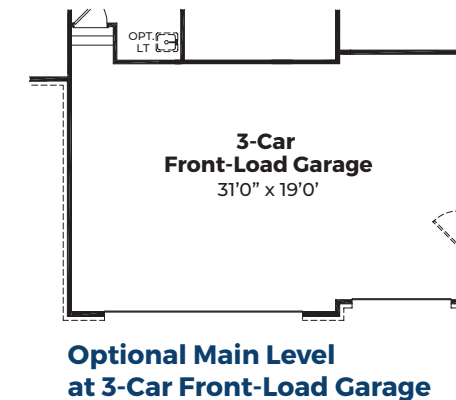
Optional Main Level at 3-Car Side-Load Garage at Farmhouse Elevation



Optional Main Level at 2-Car Side-Load Garage at Eastern Seaboard Elevation



Optional Main Level at 3-Car Side-Load Garage at Eastern Seaboard Elevation



Optional Main Level at 3-Car Front-Load Garage

MAIN LEVEL